



LANGHOLZ WILSON ELLIS
Commercial Real Estate Services



LANGHOLZ WILSON ELLIS
Commercial Real Estate Services

**East Liberty Place North
Retail Space Available
5807 - 5845 Penn Avenue**

Demographics

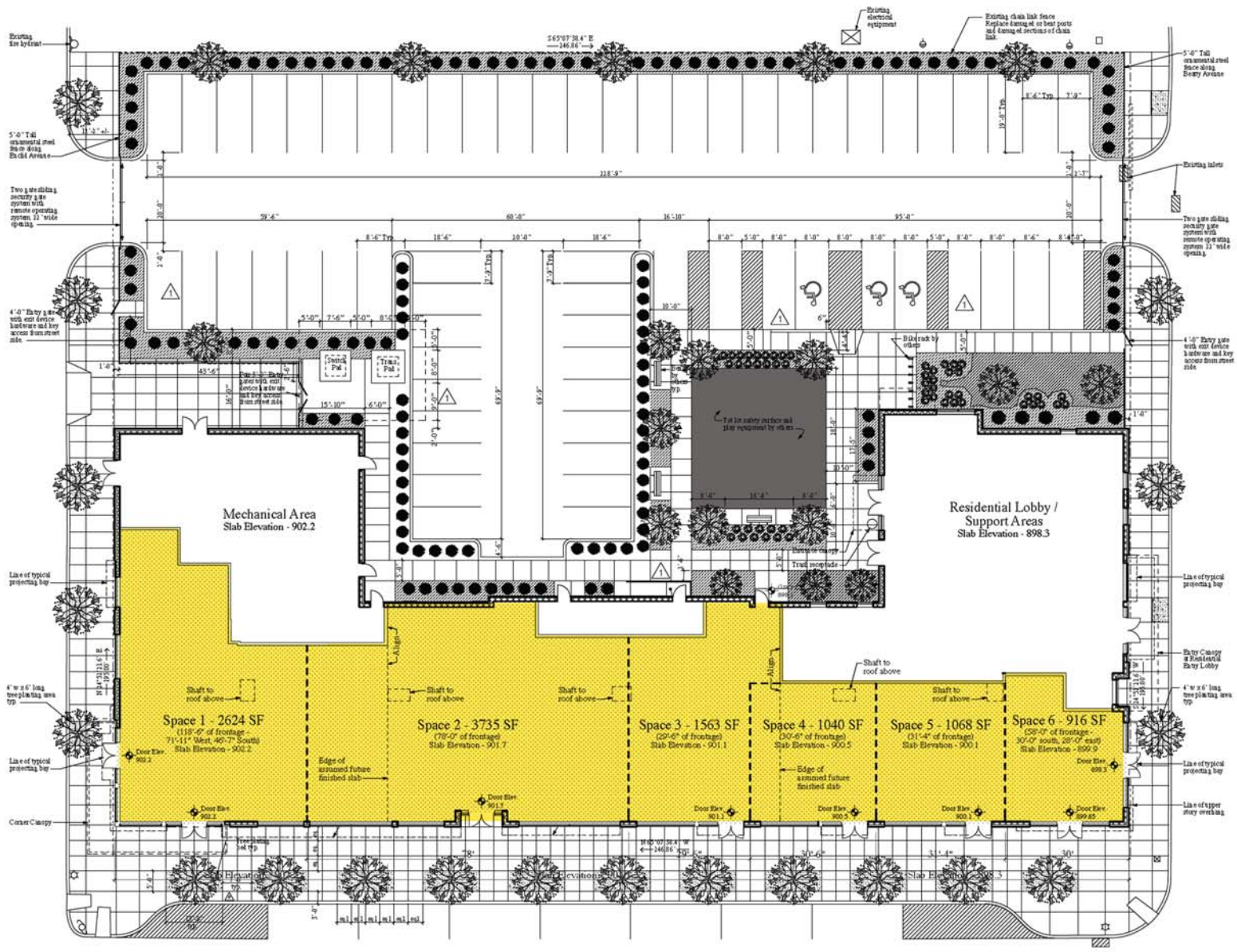
	1 mi	2 mi	3 mi	5 mi
Population (12/08 postal)	34,170	101,643	179,090	351,774
Households (12/08 postal)	17,256	45,987	80,286	153,415
Avg. HH Income (2008 est.)	\$53,796	\$62,126	\$56,978	\$55,485
Median HH Income (2008 est.)	\$36,227	\$41,266	\$40,007	\$41,118



NEW STREET FRONT RETAIL SPACE

- Approximately 11,000 SF available on the ground floor of the new East Liberty Place North which features 54 new apartment homes
- Located at the signalized intersection of Penn Ave and Penn Circle West
- Flexible Storeroom sizing
- Excellent visibility
- Project is LEED Certified for energy efficiency and sustainability

For additional information, contact:
Brian Kerr
(bkerr@LWEre.com)
412-261-2200

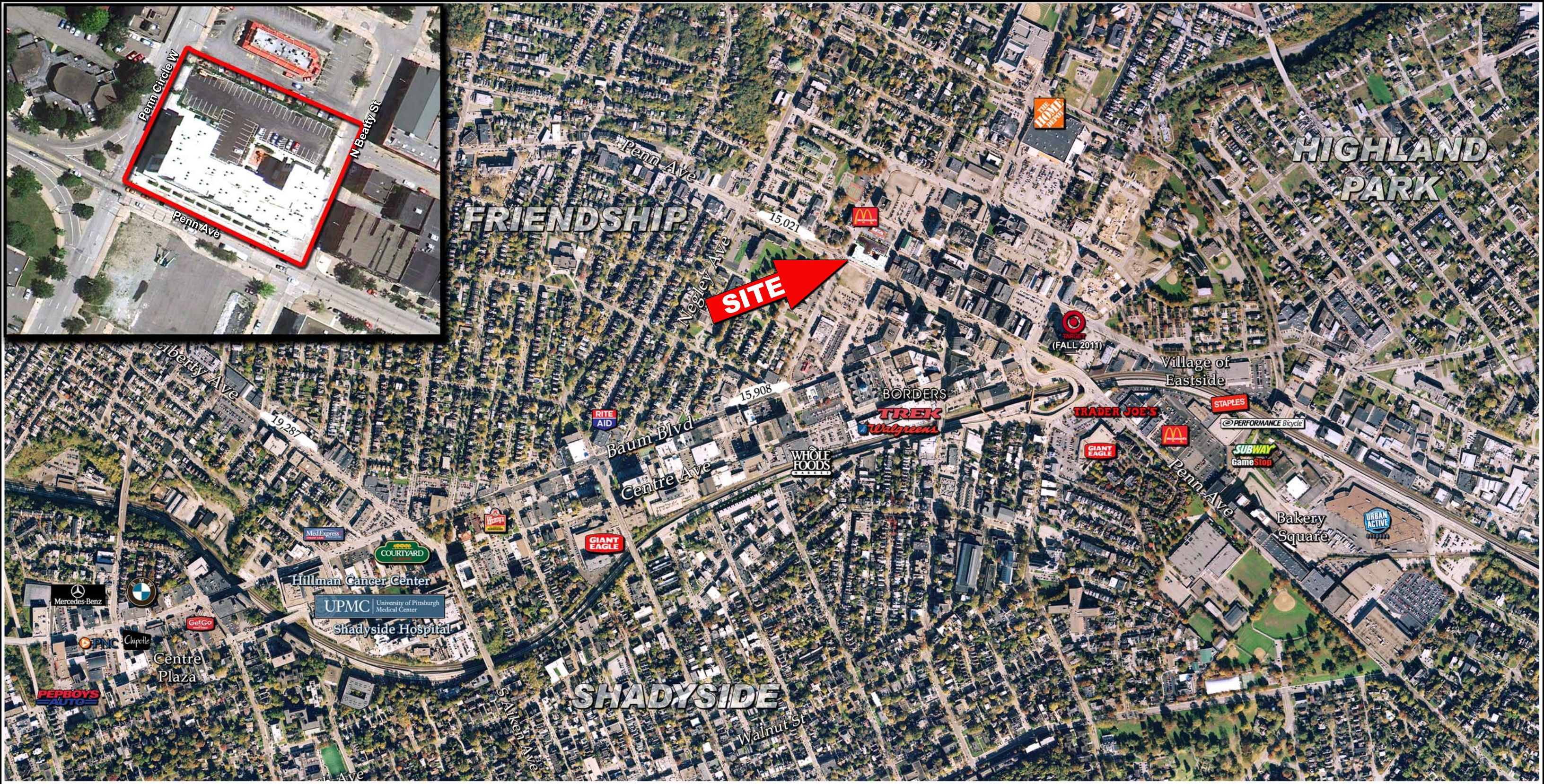


606 Liberty Avenue • Suite 300 • Pittsburgh, PA 15222 • Phone: 412-261-2200 • Fax: 412-261-2075



LANGHOLZ WILSON ELLIS
Commercial Real Estate Services

East Liberty Place North
Retail Space Available
5807 - 5845 Penn Avenue



606 Liberty Avenue • Suite 300 • Pittsburgh, PA 15222 • Phone: 412-261-2200 • Fax: 412-261-2075

ALL INFORMATION FURNISHED REGARDING PROPERTY FOR SALE, RENTAL OR FINANCING IS FROM SOURCES DEEMED RELIABLE. NO REPRESENTATION IS MADE AS TO THE ACCURACY THEREOF, AND IT IS SUBMITTED SUBJECT TO ERRORS, OMISSIONS, CHANGE OF PRICE, RENTAL, OR OTHER CONDITIONS, PRIOR SALE LEASE, FINANCING OR WITHDRAWAL WITHOUT NOTICE. LANGHOLZ WILSON ELLIS, INC., WILL MAKE NO REPRESENTATION, AND ASSUME NO OBLIGATION, REGARDING THE PRESENCE OR ABSENCE OF TOXIC OR HAZARDOUS WASTE OR SUBSTANCES OR OTHER UNDESIRABLE MATERIAL ON OR ABOUT THE PROPERTY.