



LANGHOLZ WILSON ELLIS

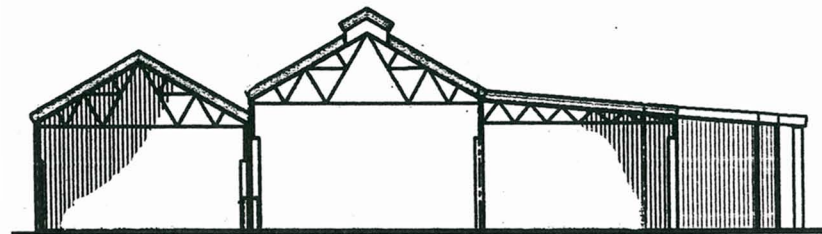
Commercial Real Estate Services

For Lease
3527 Smallman St
Pittsburgh (Strip District), PA



Building Size: 44,000+/- S.F.
Lot Size: 1.57 acres
Cranes: Removed
Ceiling Height: 23' - 27'6" - 22'6" clear span - 50' bays
Docks: Possible
Drive-In Doors: 2
Rail Access: No
Parking: 14 cars
Sprinklered: No
Zoning: GI - General Industrial
Construction: Steel frame masonry and metal siding
Floors: Concrete
Floor Drains: Yes
Heat: Overhead
Miscellaneous: Owner will build-to-suit

Former Brake Drum Property



For further information, contact:

Glenn Williams
(gwilliams@LWEre.com)
412-261-2200

606 Liberty Avenue • Suite 300 • Pittsburgh, PA 15222 • Phone: 412-261-2200 • Fax: 412-261-2075 • www.LWEre.com



ALL INFORMATION FURNISHED REGARDING PROPERTY FOR SALE, RENTAL OR FINANCING IS FROM SOURCES DEEMED RELIABLE. NO REPRESENTATION IS MADE AS TO THE ACCURACY THEREOF, AND IT IS SUBMITTED SUBJECT TO ERRORS, OMISSIONS, CHANGE OF PRICE, RENTAL, OR OTHER CONDITIONS, PRIOR SALE LEASE, FINANCING OR WITHDRAWAL WITHOUT NOTICE. LANGHOLZ WILSON ELLIS, INC., WILL MAKE NO REPRESENTATION, AND ASSUME NO OBLIGATION, REGARDING THE PRESENCE OR ABSENCE OF TOXIC OR HAZARDOUS WASTE OR SUBSTANCES OR OTHER UNDESIRABLE MATERIAL ON OR ABOUT THE PROPERTY.

