



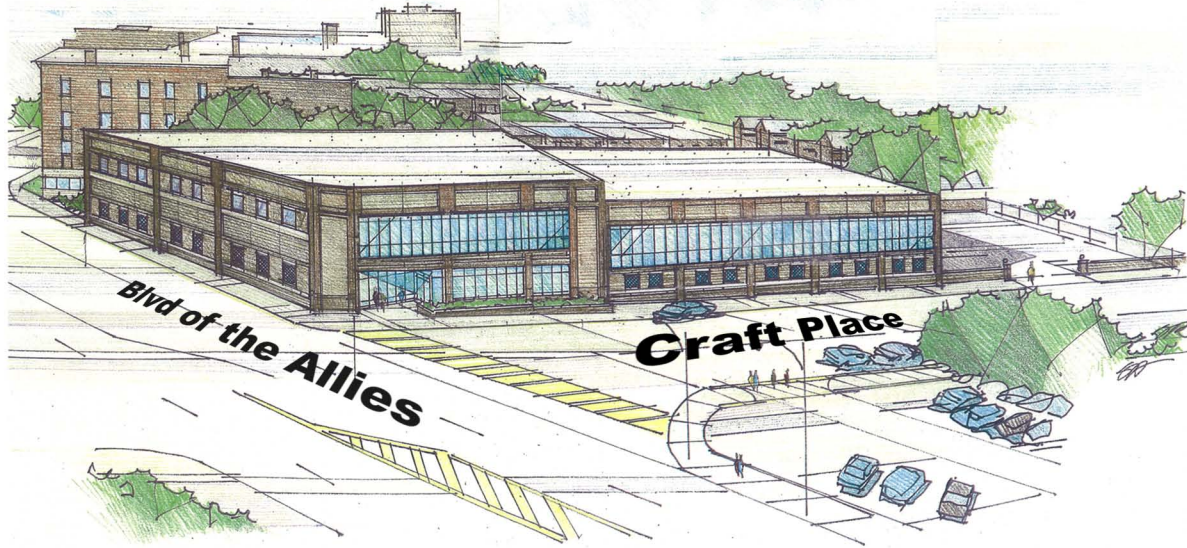
LANGHOLZ WILSON ELLIS

Commercial Real Estate Services

New Oakland Office Space For Lease

3224 Blvd of the Allies
Pittsburgh (Oakland), PA

- 20,000 sq ft
- Class A Office
- 68 car parking with 42 spaces indoor
- Available Fall 2010



For additional information, contact:
Michael Liguori
 (mliguori@LWEre.com)
 or
Gary S. Wilson, SIOR
 (gwilson@LWEre.com)
412-261-2200

606 Liberty Avenue • Suite 300 • Pittsburgh, PA 15222 • Phone: 412-261-2200 • Fax: 412-261-2075 • www.LWEre.com



ALL INFORMATION FURNISHED REGARDING PROPERTY FOR SALE, RENTAL OR FINANCING IS FROM SOURCES DEEMED RELIABLE. NO REPRESENTATION IS MADE AS TO THE ACCURACY THEREOF, AND IT IS SUBMITTED SUBJECT TO ERRORS, OMISSIONS, CHANGE OF PRICE, RENTAL, OR OTHER CONDITIONS, PRIOR SALE LEASE, FINANCING OR WITHDRAWAL WITHOUT NOTICE. LANGHOLZ WILSON ELLIS, INC., WILL MAKE NO REPRESENTATION, AND ASSUME NO OBLIGATION, REGARDING THE PRESENCE OR ABSENCE OF TOXIC OR HAZARDOUS WASTE OR SUBSTANCES OR OTHER UNDESIRABLE MATERIAL ON OR ABOUT THE PROPERTY.





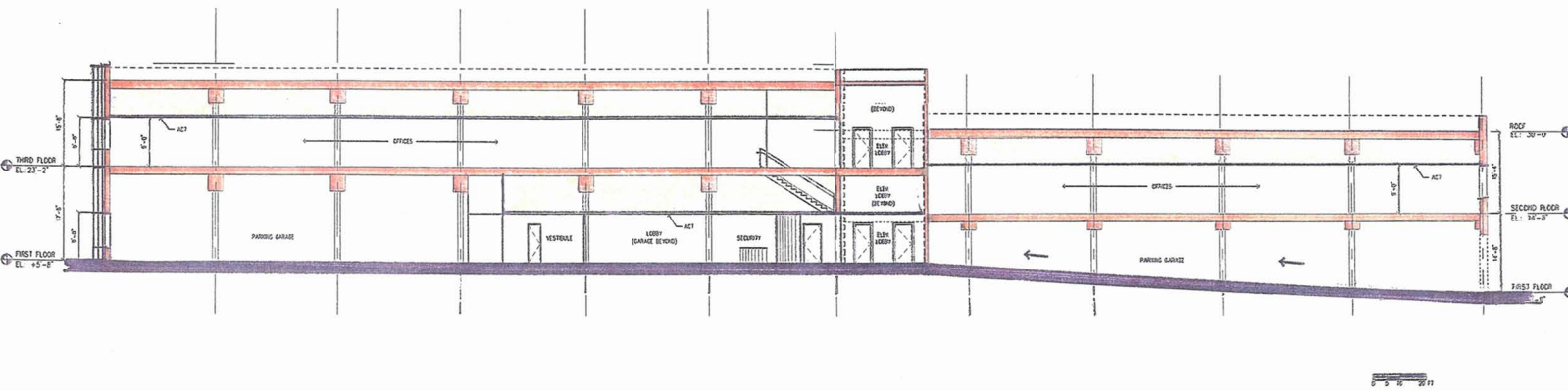
LANGHOLZ WILSON ELLIS

Commercial Real Estate Services

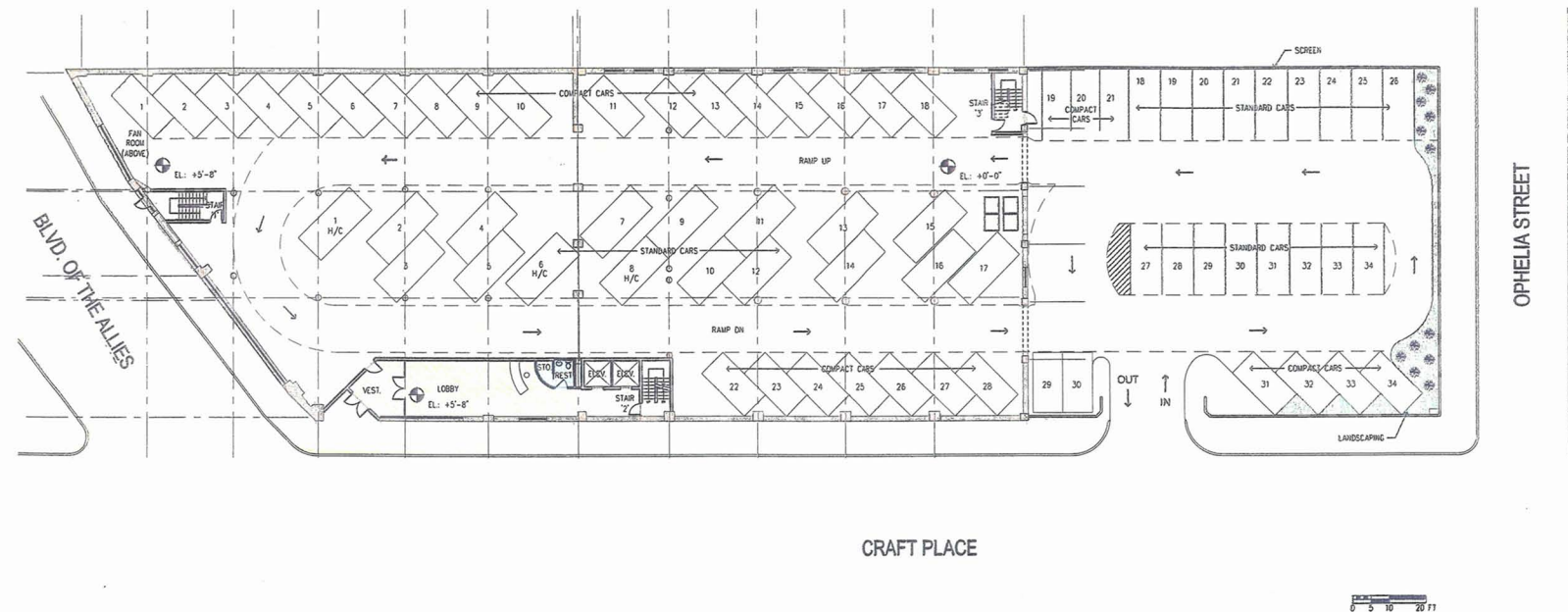
New Oakland Office Space For Lease

3224 Blvd of the Allies
Pittsburgh (Oakland), PA

Elevation



Parking



PROPOSED FIRST FLOOR PLAN - SCHEME 'A'
SCALE: N.T.S.