



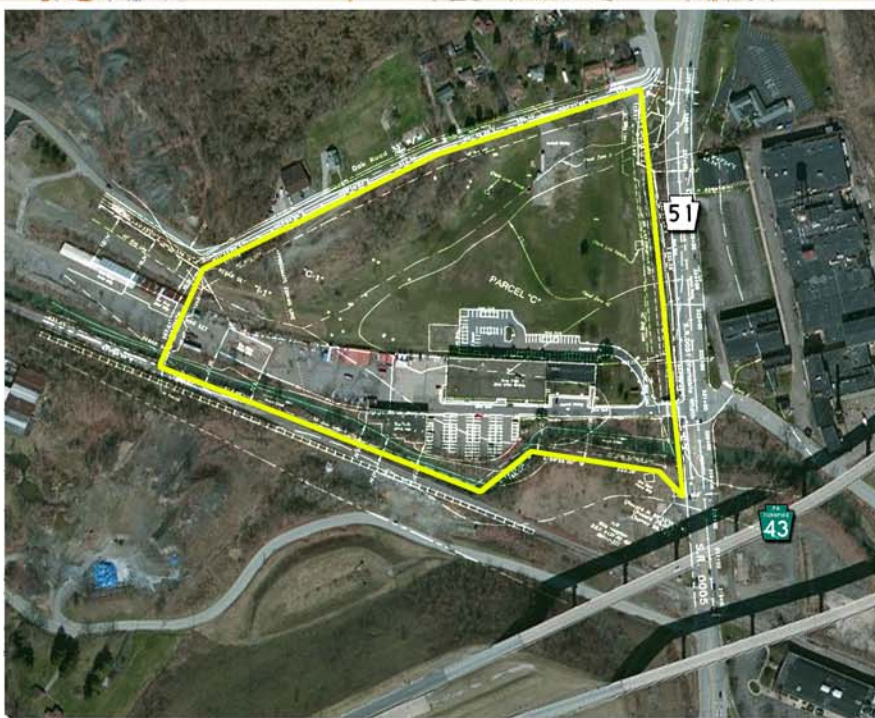
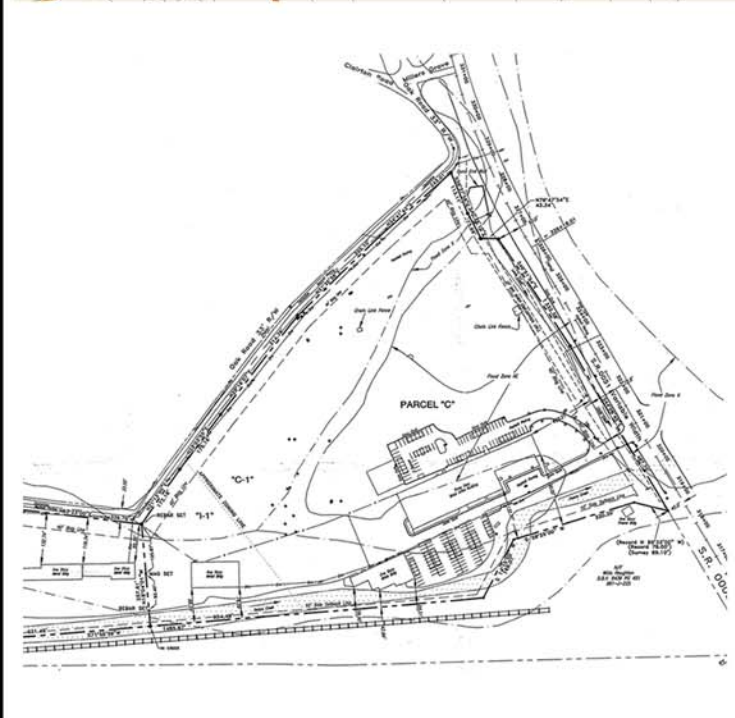
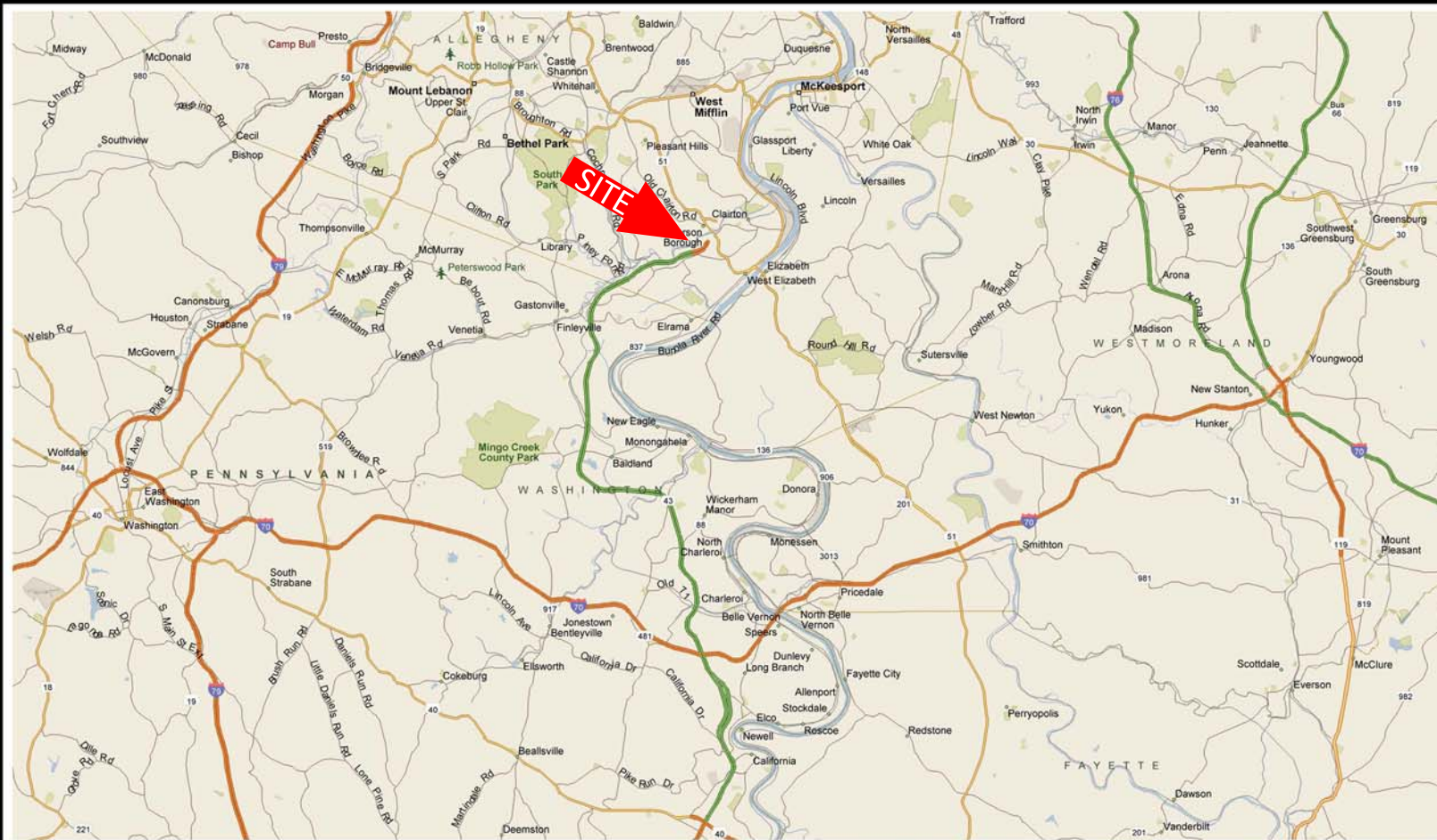
**LANGHOLZ WILSON ELLIS**  
Commercial Real Estate Services



**LANGHOLZ WILSON ELLIS**  
Commercial Real Estate Services

# Available Buildings and Land For Sale or Lease

1900 Route 51 | Jefferson Hills, PA



*Main Building*



*Service Building*

- Land Area: Approximately 19.4 acres
- Signalized Access from Route 51
- Located near the Route 51 and PA Turnpike 43 Interchange
- 80 Striped and Paved Parking Spaces
- 12 Miles South of Pittsburgh's CBD
- 20 Miles From I-70
- Ample, Level Outside Storage Space

**Main Building**

- 40,000 SF Office Space - Approximately
- 14,000 SF Shop Space - Approximately
- 2 - 18' Drive-in Doors
- 20' Ceilings in Shop Space

**Service Building**

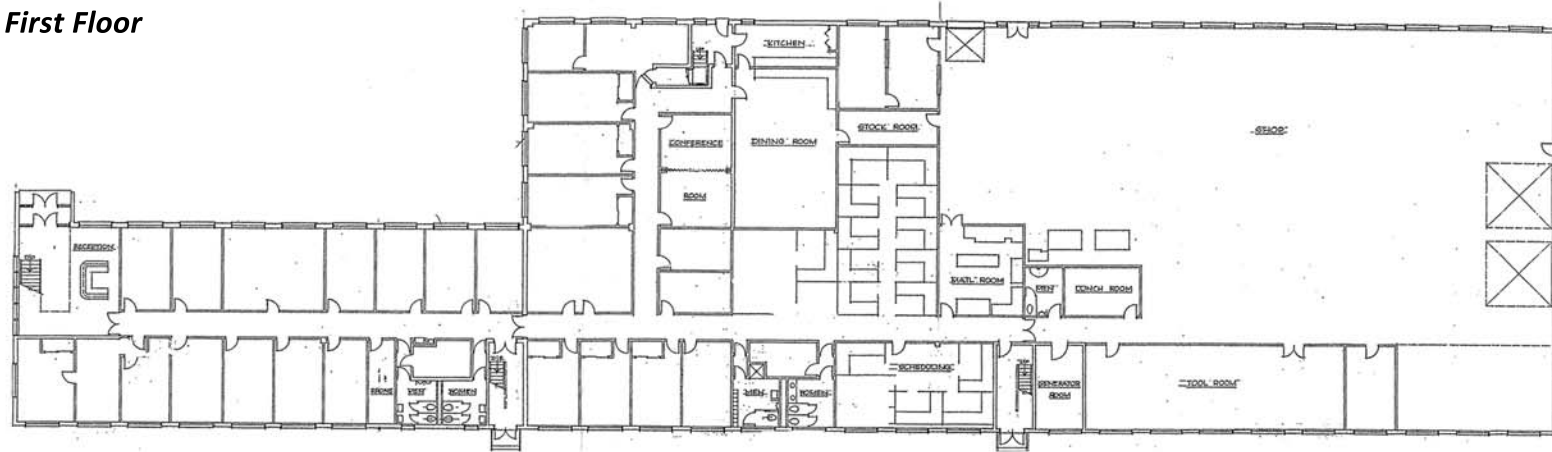
- 7,000 SF - Approximately
- 3 - 12' Drive-in Doors
- 2 - 16' Drive-in Doors
- Wash Bay
- Service Bay

For additional information, contact:  
**Matthew P. Virgin, SIOR**  
 (mvirgin@LWEre.com)  
**J. Keefe Ellis**  
 (jkellis@LWEre.com)  
**412-261-2200**

606 Liberty Avenue • Suite 300 • Pittsburgh, PA 15222 • Phone: 412-261-2200 • Fax: 412-261-2075



First Floor



Second Floor



Rear of Main Building

