



LANGHOLZ WILSON ELLIS
Commercial Real Estate Services



LANGHOLZ WILSON ELLIS
Commercial Real Estate Services

For Sale
1 Ogleview Rd
Cranberry Twp, PA



*Proposed
Cranberry
Promenade*



- 0.687 acre lot
- 1-story building
- +/- 197' frontage on Rt. 19
- Southwest corner of signalized Route 19 - Ogleview Rd intersection
- 33,890 ADT on Route 19
- Zoned Mixed Use

For further information, contact:
James Yarish (jyarish@LWEre.com)
J. Keefe Ellis (jkellis@LWEre.com)
412-261-2200

606 Liberty Avenue • Suite 300 • Pittsburgh, PA 15222 • Phone: 412-261-2200 • Fax: 412-261-2075



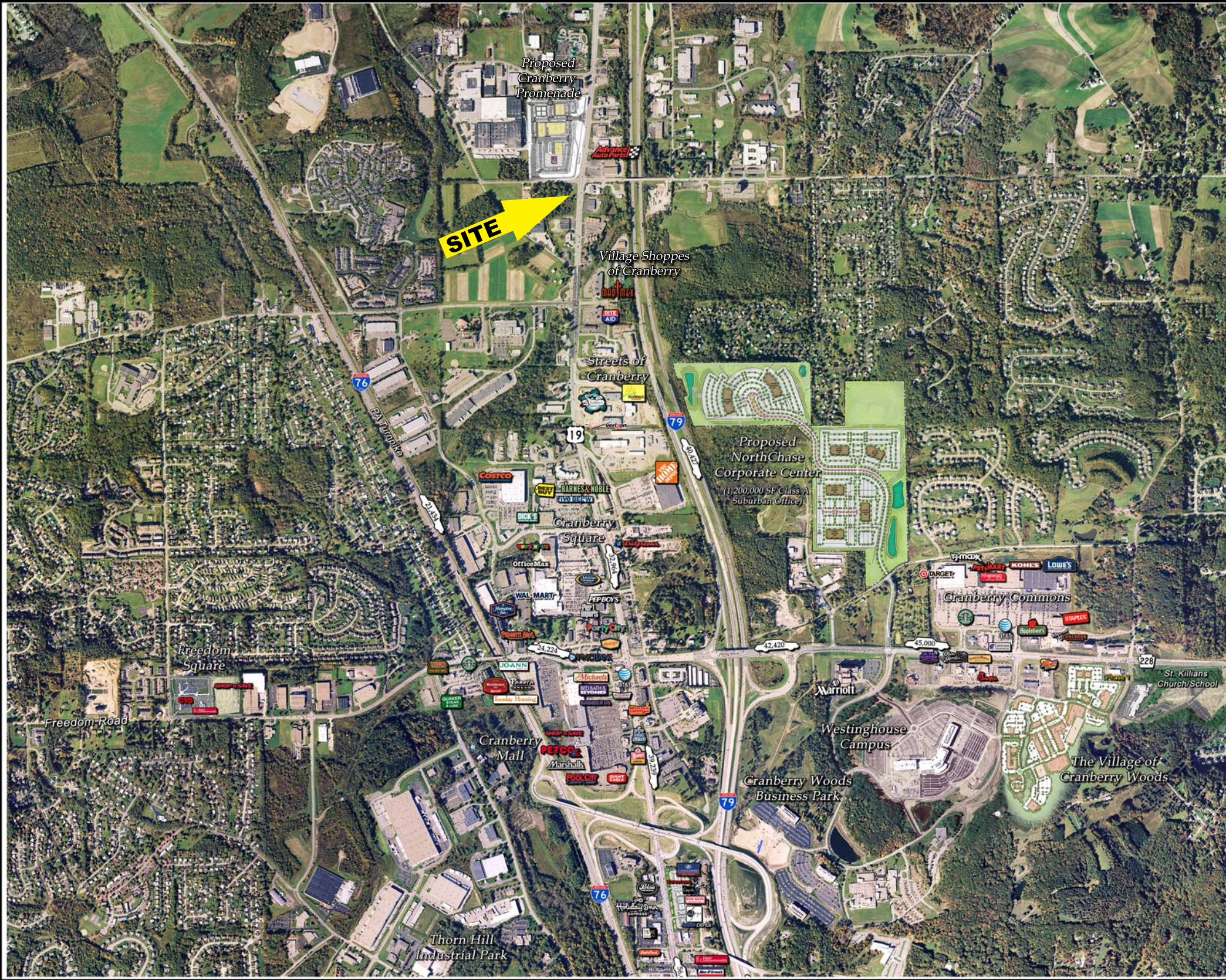
ALL INFORMATION FURNISHED REGARDING PROPERTY FOR SALE, RENTAL OR FINANCING IS FROM SOURCES DEEMED RELIABLE. NO REPRESENTATION IS MADE AS TO THE ACCURACY THEREOF, AND IT IS SUBMITTED SUBJECT TO ERRORS, OMISSIONS, CHANGE OF PRICE, RENTAL, OR OTHER CONDITIONS, PRIOR SALE LEASE, FINANCING OR WITHDRAWAL WITHOUT NOTICE. LANGHOLZ WILSON ELLIS, INC., WILL MAKE NO REPRESENTATION, AND ASSUME NO OBLIGATION, REGARDING THE PRESENCE OR ABSENCE OF TOXIC OR HAZARDOUS WASTE OR SUBSTANCES OR OTHER UNDESIRABLE MATERIAL ON OR ABOUT THE PROPERTY.





LANGHOLZ WILSON ELLIS
Commercial Real Estate Services

For Sale
1 Oglevue Rd
Cranberry Twp, PA



Demographics	1 mi	3 mi	5 mi	7 mi
Population (12/08 postal)	4,205	33,179	60,456	97,161
Households (12/08 postal)	1,703	11,806	21,542	35,340
Avg. HH Income (2008 est.)	\$98,896	\$107,880	\$115,481	\$107,667
Median HH Income (2008 est.)	\$81,411	\$88,235	\$88,665	\$83,385

606 Liberty Avenue • Suite 300 • Pittsburgh, PA 15222 • Phone: 412-261-2200 • Fax: 412-261-2075

ALL INFORMATION FURNISHED REGARDING PROPERTY FOR SALE, RENTAL OR FINANCING IS FROM SOURCES DEEMED RELIABLE. NO REPRESENTATION IS MADE AS TO THE ACCURACY THEREOF, AND IT IS SUBMITTED SUBJECT TO ERRORS, OMISSIONS, CHANGE OF PRICE, RENTAL, OR OTHER CONDITIONS, PRIOR SALE LEASE, FINANCING OR WITHDRAWAL WITHOUT NOTICE. LANGHOLZ WILSON ELLIS, INC., WILL MAKE NO REPRESENTATION, AND ASSUME NO OBLIGATION, REGARDING THE PRESENCE OR ABSENCE OF TOXIC OR HAZARDOUS WASTE OR SUBSTANCES OR OTHER UNDESIRABLE MATERIAL ON OR ABOUT THE PROPERTY.